

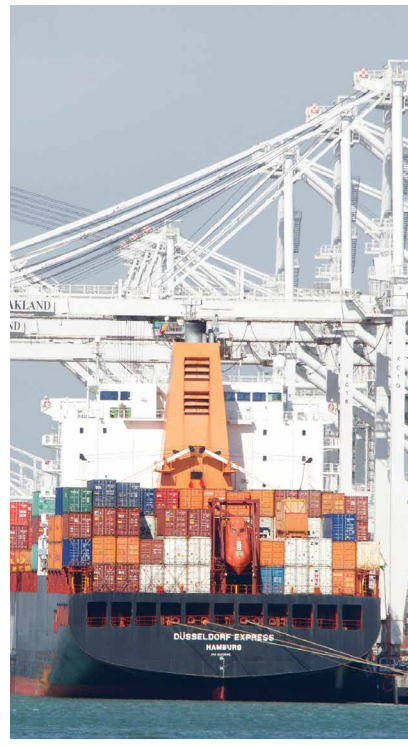


Training Institute
Education Centers

Chabot-Las Positas
Community College District
Office of Economic Development
and Contract Education



2019 TRAINING CATALOG



California • Nevada • Arizona • Hawaii • Guam
osha4you.com • 866.936.OSHA (6742)

Table of Contents

General Information	1
Locations	2
On-Site Training	4
Safety & Health Certificate Programs	5
OSHA Outreach Trainer Program	9
Prerequisites, Registration, and Fees	10
Cancellation, Tardiness, and Grades	11
Continued Education Units Information	12
Course Descriptions	13
Schedule by Course	28
Course Index	40

“The real life topics and the content were very applicable to my own career.”

General Information

The OSHA Training Institute Education Center (OTIEC) at Chabot-Las Positas Community College District is authorized by the U.S. Department of Labor to deliver occupational safety and health training on behalf of OSHA, and has been conducting OSHA courses since 2008. We are headquartered in the San Francisco Bay Area and deliver OSHA's safety courses throughout California, Arizona, Hawaii, Nevada, Guam and at your facility.

Students are able to earn and maintain their OSHA credentials as well as earn OTC Continuing Education Units which can be applied to many safety professional designations including the CSP, CHST, OHST and ABIH safety credentials. Our instructors are industry safety professionals who bring the latest information, experience and techniques to our state-of-the-art classrooms and incorporate real world experiences into classroom instruction and hands-on learning exercises.

Industries Served

We offer courses in the following industries:

- Construction
- General Industry
- Healthcare
- Oil & Gas
- Maritime
- Disaster Site Worker

Military Veteran Discount

We offer all active and retired military a 10% discount on all training.

Federal/State OSHA Employee Discount

We offer a 10% discount on all training.

Financial Aid

Financial assistance may be available for all of those who qualify. Please note that there are different requirements and available resources. Start by contacting your local resource groups below for additional information:

Employment Development Department
<http://www.edd.ca.gov/>

California Workforce Development Board
<https://cwdb.ca.gov/>

America's Job Centers/Career One-Stop
<https://www.careeronestop.org/LocalHelp/service-locator.aspx>

Veterans Affairs
<https://www.benefits.va.gov/benefits/>

Contact

Address: 7600 Dublin Boulevard, Suite 140
 Dublin, CA 94568

Phone: (866) 936-6742

Fax: (925) 249-9367

Email: otc@clpccd.org

Website: www.osha4you.com



Board of Trustees

Edralin J. Maduli, President • Marshall Mitzman, Ph.D., Past President • Genevieve Randolph, Secretary
 Donald L. "Dobie" Gelles • Hal G. Gin, Ph.D. • Linda Granger • Carlo Vecchiarelli

The Chabot-Las Positas Board of Trustees governs the Chabot-Las Positas Community College District and is responsible for all policy decisions. The Board meets once a month.

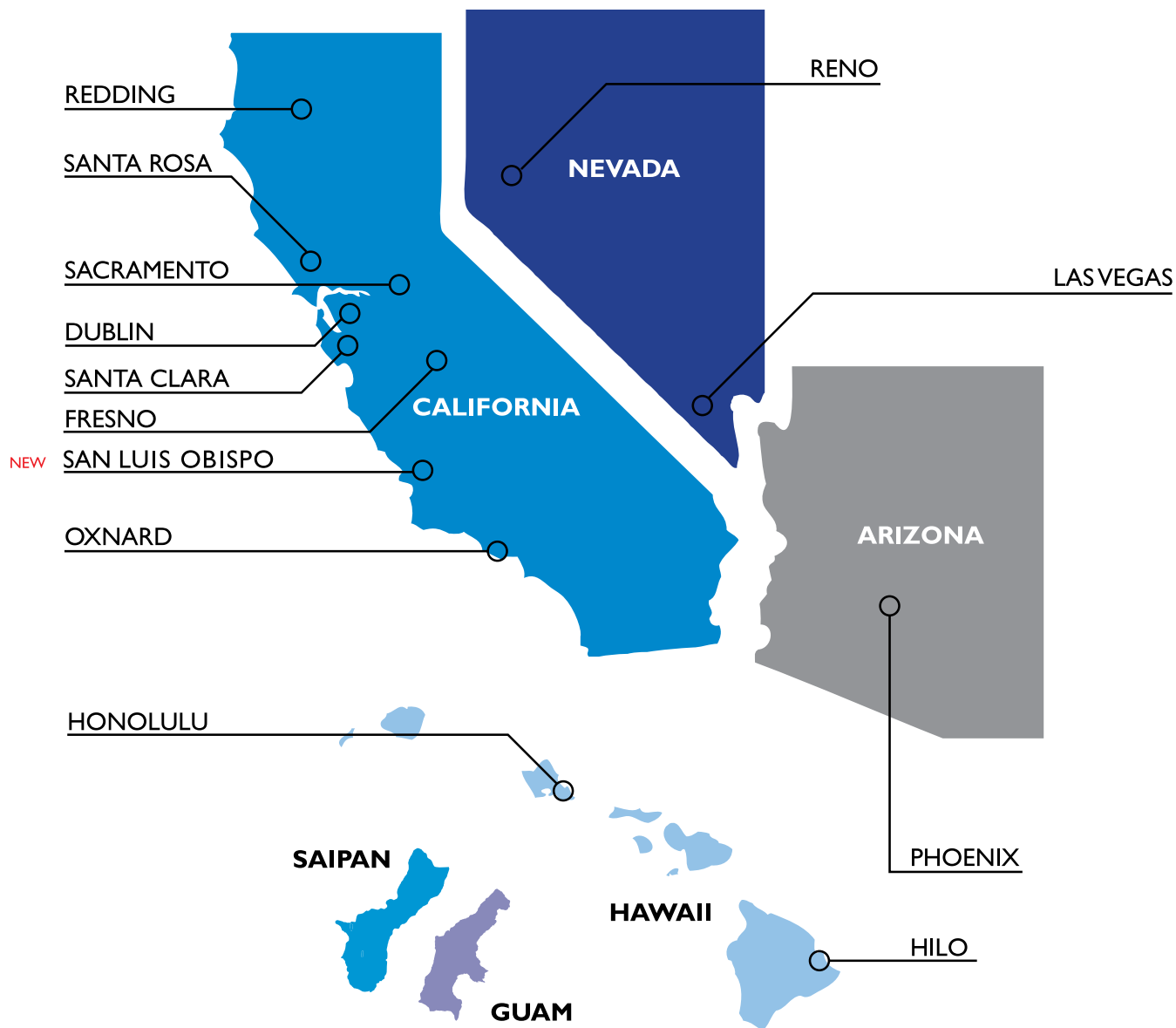
Locations

Multiple Locations

The OSHA Training Institute Education Center provides training at convenient locations near you and your organization. For additional information visit us online at www.osha4you.com/locations.

We Can Also Come to You!

Contact us for information on CUSTOMIZED ON-SITE TRAINING



Northern California

OSHA Training Institute Education Center Home Office

7600 Dublin Blvd., Suite 140
Dublin, CA 94568
www.osha4you.com

The Trade School

Shasta Builders Exchange
5800 Airport Road
Redding, CA 96002
www.shastabe.com

Safety Center, Inc.

3909 Bradshaw Road
Sacramento, CA 95827
www.safetycenter.org

Sacramento Regional Builders Exchange

5370 Elvas Avenue
Sacramento, CA 95819
www.srbx.org

Builders Exchange of Santa Clara County

400 Reed Street
Santa Clara, CA 95050
www.bxscco.com

North Coast Builders Exchange

1030 Apollo Way
Santa Rosa, CA 95407
www.ncbeonline.com

Central California

Central California Builders Exchange

1244 N. Mariposa Street
Fresno CA 93703
www.cencalbx.com

SLO County Builders Exchange

153 Cross St., Suite 130
San Luis Obispo, CA 93401
www.slocbe.com

Southern California

Ventura County Contractors Association

1830 Lockwood St., Suite 110
Oxnard, CA 93036
www.vccamember.com

Nevada

Nevada S.C.A.T.S.

3360 W. Sahara Ave.
Las Vegas, NV 89102
www.4safenv.state.nv.us

Regional Public Safety Training Center

5190 Spectrum Blvd.
Reno, NV 89512
www.rpstc-reno.com

Hawaii

HAWAII (Hilo)

Hawaii Innovation Center
117 Keawe Street #105
Hilo, HI 96720

HAWAII (Honolulu)

Airport Conference Center
400 Rodgers Blvd.
Honolulu, HI 96819
7th Floor Hawaiian Inter Island Terminal Building
Honolulu International Airport

On-site Training

Customizable Courses

All of our courses can be fully customized to accommodate your organization's specific requirements. We work collaboratively with you to provide a thorough assessment of your needs and tailor a curriculum that most closely matches your particular goals.

Additional Benefits

Our instructors can provide on-site training at your location according to your schedule. Benefits of offering our courses at your site include:

- Cost savings for groups
- No employee travel expenses
- Accommodate variable shifts and schedules
- Employees learn using their equipment, at their worksite
- Expert instructors focused on your specific needs

For On-site Customized Training Questions:

866.936.OSHA (6742)
otc@clpccd.org

*We bring
our
courses
to you*



Safety & Health Certificate Programs

Certificate Programs

The OSHA Training Institute Education Center at Chabot-Las Positas Community College District offers four levels of Professional Safety certificates to take your career and your organization's safety program to the next level. These courses provide focused, real-world information that can be immediately applied in your organization and give you knowledge in many safety and health topics, allowing you to build a broader safety expertise.

These certificates recognize individuals who, through training, have received specialized information in a particular area and ensure that you:

- Are informed about today's changing regulations, guidance documents, and regulatory interpretations
- Have developed an awareness of government agencies affecting your industry
- Can communicate safety and health problems to your management team and staff members
- Avoid costly citations by staying compliant with OSHA regulations
- Demonstrate proficiency and ambition to enhance your career
- Create a network of others who share similar concerns and resolutions
- Continue your professional development in a growing and changing field

IMPORTANT: As of November 1, 2017, all courses applied towards certificate program completion must have been taken within the previous 5 years (completion date must be within 5 years from the oldest class being applied to certificate completion). Please plan accordingly. Contact us if you have questions.



Safety Associate

The Safety Associate Certificate will provide attendees with a solid foundation for understanding OSHA regulatory standards and developing solutions to workplace safety challenges. Participants in the Safety Associate Certificate can tailor their program to reflect their own areas of interest through a selection of required courses and electives.

How You Will Benefit

- Understand the essential elements of an effective workplace safety program
- Learn the fundamentals of OSHA standards and how they affect your business
- Learn to identify potential hazards and their solutions
- Understand the essential elements of an effective safety program
- Develop accident investigation skills

Required Courses (3)

Construction Track

- OSHA 510: OSHA Standards for the Construction Industry
- OSHA 7505: Introduction to Incident (Accident) Investigation
- OSHA 7845: Recordkeeping Rule Seminar

General Industry Track

- OSHA 511: OSHA Standards for General Industry
- OSHA 7505: Introduction to Incident (Accident) Investigation
- OSHA 7845: Recordkeeping Rule Seminar

Elective Courses (3)

- Choose **three** additional OSHA Training Institute Education Center courses. See elective course list at osha4you.com/professional-certificates



Specialist in Safety & Health

The Specialist in Safety and Health Certificate Program is designed to expand and improve the practical skills of those responsible for employee health and safety at their workplace. The courses examine critical *workplace* safety and health issues and provide training *in the skills* necessary for managing a proactive health and safety program. Participants in the Specialist in Safety and Health Certificate Program can select from an educational track with a concentration in either **Construction** or **General Industry** safety. Individuals seeking to complete this program must have a minimum of 5 years of industry safety experience and meet the prerequisite requirements of OSHA 500 or 501.



How You Will Benefit

- Build on your knowledge of OSHA regulations
- Gain knowledge of changing regulations, guidance documents and regulatory interpretations
- Implement ergonomics and develop the management tools to avoid disabilities
- Teach safety skills to your team
- Demonstrate competency when dealing with regulatory agencies

Required Courses (4)

Construction Track

- OSHA 510: OSHA Standards for the Construction Industry
- OSHA 500: Trainer Course in Occupational Safety & Health Standards for the Construction Industry **OR** OSHA 502: Update for Construction Industry Outreach Trainers
- OSHA 7505: Introduction to Incident (Accident) Investigation
- OSHA 7845: Recordkeeping Rule Seminar

General Industry Track

- OSHA 511: OSHA Standards for General Industry
- OSHA 501: Trainer Course in OSHA Standards for General Industry **OR** OSHA 503: Update for General Industry Outreach Trainers
- OSHA 7505: Introduction to Incident (Accident) Investigation
- OSHA 7845: Recordkeeping Rule Seminar

Elective Courses (4)

- Choose **four** additional OSHA Training Institute Education Center courses. See elective course list at osha4you.com/professional-certificates



Certified Safety & Health Official

Businesses today face an overwhelming maze of safety and health regulations including employee safety, liability, training requirements, loss control, and program development and implementation. The Certified Safety and Health Official (CSHO) Certificate Program provides a clear and defined path towards earning a professional certificate with a concentration in either Construction or General Industry safety. Individuals seeking to complete this program must have a minimum of 5 years of industry safety experience and meet the prerequisite requirements of OSHA 500 or 501.

How You Will Benefit

- Develop the skills and knowledge for developing and delivering health and safety programs
- Develop your staff's expertise in health and safety strategies
- Gain knowledge of changing regulations, guidance documents and regulatory interpretations
- Earn appropriate credentials to teach and lead others
- Demonstrate competency when dealing with regulatory agencies

Who Should Participate

The Construction Industry Track is designed for personnel who perform safety and health work on a daily basis in construction environments or have safety responsibilities over others at those locations, including inspections and audits.

The General Industry Track relates more to personnel who perform safety and health work at industrial facilities or have safety responsibilities over others at those facilities or locations, and whose work includes inspections and audits.

Required Courses (7)

Construction Track

- OSHA 510: OSHA Standards for the Construction Industry
- OSHA 500: Trainer Course in Occupational Safety & Health Standards for the Construction Industry **OR** OSHA 502: Update for Construction Industry Outreach Trainers
- OSHA 2264: Permit-Required Confined Space Entry
- OSHA 3015: Excavation, Trenching, & Soil Mechanics
- OSHA 3095: Electrical Standards
- OSHA 3115: Fall Protection
- OSHA 7505: Introduction to Incident (Accident) Investigation

General Industry Track

- OSHA 511: Occupational Safety & Health Standards for General Industry
- OSHA 501: Trainer Course in OSHA Standards for General Industry **OR** OSHA 503: Update for General Industry Outreach Trainers
- OSHA 2015: Hazardous Materials
- OSHA 2045: Machinery and Machine Guarding Standards
- OSHA 2264: Permit-Required Confined Space Entry
- OSHA 3095: Electrical Standards
- OSHA 7505: Introduction to Incident (Accident) Investigation

Elective Courses (3)

- Choose **three** additional OSHA Training Institute Education Center courses. See elective course list at osha4you.com/professional-certificates

CERTIFICATE PROGRAM:

PUBLIC SECTOR SAFETY & HEALTH FUNDAMENTALS

Public Sector Safety & Health Fundamentals Certificate Program

The certificate program in Public Sector Safety & Health Fundamentals supports OSHA's mission by training public sector employees in occupational safety and health to reduce incident rates for workers in state and local governments. Participants have the opportunity to earn certificates for Construction or General Industry training.

Participants can choose from a variety of topics such as occupational safety and health standards for construction or general industry, safety and health management, accident investigation, fall hazard awareness, and recordkeeping. Although this program was primarily designed for public sector employees, it is available for anyone interested in furthering their knowledge of occupational safety and health.

*“[The instructor’s]
way of mixing
real world
examples with
the course
makes it more
understandable.”*

How You Will Benefit

- Understand OSHA standards and how they affect public sector organizations
- Learn the fundamentals needed to deal with potential hazards
- Reduce injuries and health problems among your co-workers
- Understand the essential elements of an effective safety program
- Develop accident investigation skills
- Gain knowledge of changing regulations, guidance documents and regulatory interpretations
- Demonstrate competency when dealing with regulatory agencies

Participants in the Public Sector Safety & Health Fundamentals Certificate Program can customize their program to reflect their own areas of interest by pursuing the Construction or General Industry Public Sector Safety & Health Fundamentals Certificate and through a selection of core required courses and electives.

Required Courses (3)

Construction Track

- OSHA 510: OSHA Standards for Construction
- OSHA 7500: Introduction to Safety and Health Management
- OSHA 7505: Introduction to Accident Investigation

General Industry Track

- OSHA 511: OSHA Standards for General Industry
- OSHA 7500: Introduction to Safety and Health Management
- OSHA 7505: Introduction to Incident (Accident) Investigation

Elective Courses (4)

- Choose **four** additional OSHA Training Institute Education Center courses. See elective course list at osha4you.com/professional-certificates

Outreach Trainer Program

Become An OSHA-Authorized Outreach Trainer

The Occupational Safety and Health Administration's (OSHA) Outreach Training Program was established to train workers in the basics of safety and health hazard recognition and prevention. OSHA authorizes trainers, who complete the 4-day construction, maritime, general industry or disaster site worker train-the-trainer courses, to conduct the 10-hour and 30-hour construction, maritime, or general industry, or 16-hour disaster site worker safety and health hazard recognition and prevention courses.

Individuals who are interested in becoming an OSHA Outreach Trainer must complete the following requirements:

Construction Industry

- OSHA 510 – OSHA Standards for the Construction Industry
- OSHA 500 – Trainer Course in OSHA Standards for the Construction Industry
- Five years of construction safety experience

General Industry

- OSHA 511 – OSHA Standards for General Industry
- OSHA 501 – Trainer Course in OSHA Standards for General Industry
- Five years of general industry safety experience

Cal/OSHA

Requirements are the same as for Construction Industry or General Industry Outreach Trainers, with the additional requirement of:

- OSHA 5109 Cal/OSHA Standards for the Construction Industry; **OR**
- OSHA 5119 Cal/OSHA Standards for General Industry

Maritime Industry

- OSHA 5410 – OSHA Standards for the Maritime Industry
- OSHA 5400 – Trainer Course in OSHA Standards for the Maritime Industry
- Three years maritime industry experience
- Two years additional safety experience or recognized safety credential

Disaster Site Worker

- OSHA 500 – Trainer Course in OSHA Standards for the Construction Industry
- OSHA 501 – Trainer Course in OSHA Standards for General Industry
- OTC 204 – HAZWOPER, 40-Hour
- OSHA 5600 – Disaster Site Worker Trainer Course
- Three years of safety experience

DON'T FORGET!

You must renew your OSHA trainer card every four years. As of January 1, 2019, the 90 day grace period for renewal no longer applies.

THE 5 STEPS:



Prerequisites, Registration, & Fees

Prerequisites

Some courses have prerequisite requirements (i.e., courses that must be taken before enrolling in a class); others are open to anyone interested in the subject matter without prerequisites. Prerequisites are listed with other class information in the Course Descriptions beginning on page 13. All prerequisite information must be obtained by the OTIEC prior to the first day of class.

Registration

Course registration can be done online, or by email, phone or fax.

- Online: www.osha4you.com
- Email: otc@clpccd.org
- Phone: 866.936.OSHA (6742)
- Fax: 925.249.9367
- Mail: OSHA Training Institute
Education Center at
Chabot-Las Positas
Community College District
7600 Dublin Blvd, Suite 140
Dublin, CA 94568

Course Registration Fees

Fees vary by course and are all-inclusive (include tuition, books, equipment use, etc.), unless otherwise noted. Fees can be paid using a credit card, check, money-order or by using a purchase order. (check must clear prior to class start date).



Shipping Policy

The majority of correspondence and confirmation documentation will be submitted via email. On the occasion that information or materials are required to be shipped, standard shipping orders will typically arrive within 7 to 10 business days.

“The instructor’s vast knowledge was very valuable. He has a lot of hands on working experience and was able to provide good examples and thorough responses to questions.”

Cancellation, Attendance, & Grades

Cancellations, Credits and Refunds

Attendee cancellations or reschedules must be submitted in writing a minimum of 7 days prior to the first day of class to be eligible for a refund or credit. Cancellations or reschedules less than 7 days prior will not be eligible.

Students who do not show up to class will forfeit the entire amount of the course and will not be refunded or credited.

Transfers between students are approved on a case-by-case basis. Contact the OSHA Training Institute Education Center (OTIEC) in advance of class for consideration.

In the event that the OTIEC must cancel or reschedule any event, students will be issued a full refund or credit.

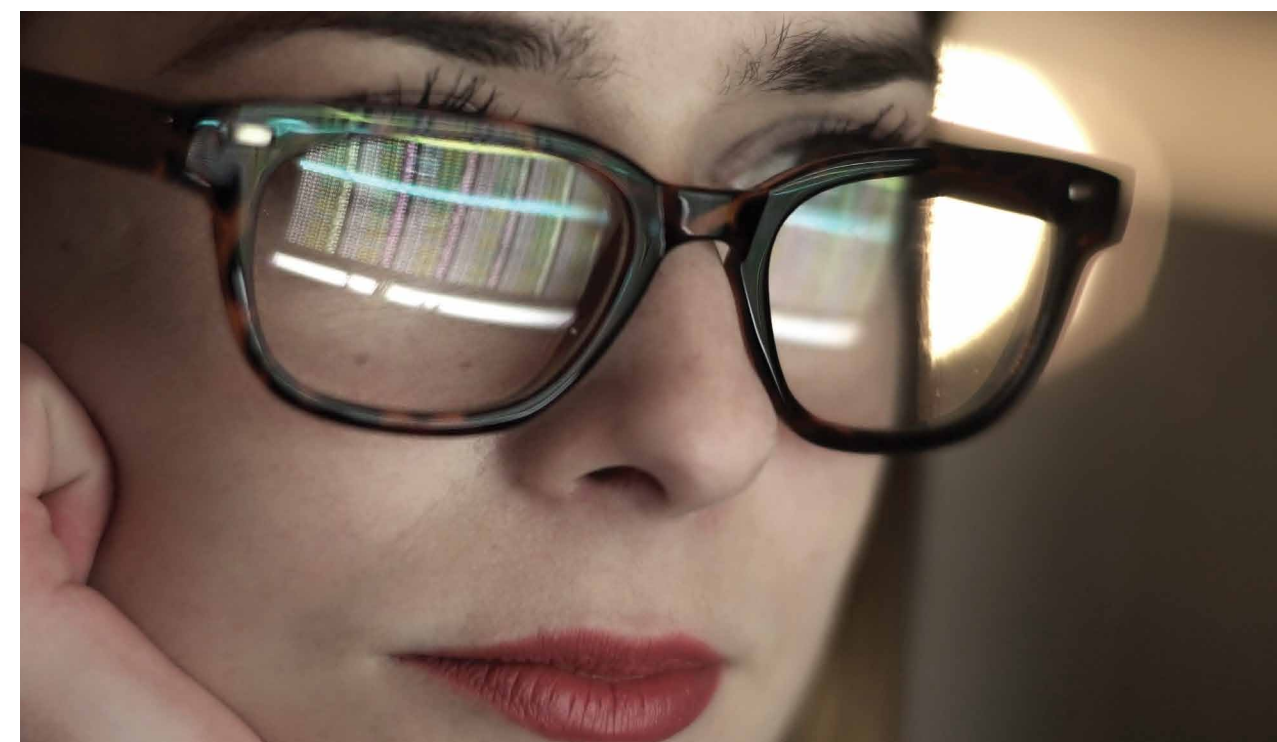
Attendance

OTIEC classes are held to OSHA standards, including the number of contact hours required per training. Late arrivals, early departures or no-shows for any of the course sessions will result in being dropped from the course without any fee refunds.

Course Grades and Policies

OTIEC classes are taught on a pass/no pass basis. Students are expected to attend all sessions in full, respect the instructor and other students, and participate in class discussions and exercises. Additionally, some courses require an examination, which students must pass to complete the course with a passing grade.

Students who do not meet the above requirements (for any reason) will receive a “no pass” for the course. Students receiving a “no pass” may re-take the course at their own expense to try to achieve a passing grade.



Continuing Education Units

Continuing Education Units (CEUs) for OSHA Training Institute Education Center courses are a nationally recognized unit of measurement for post-secondary education, professional development and career training. Through the use of CEUs, some of these courses may be used toward certification.

The acceptance of CEUs is determined by each specific organization or company. Please check with your organization or company prior to registering for one of our classes to ensure that the CEUs will be accepted.

The OSHA Training Institute Education Center determines continuing education units by awarding one continuing education unit for every ten contact hours of participation (1 CEU = 10 contact hours). Contact hours are instructional hours and do not include scheduled breaks such as lunch.

Training Locations in:

- Northern California
- Central California
- Southern California
- Nevada
- Arizona
- Hawaii
- Guam

American Board of Industrial Hygiene (ABIH) Certification Maintenance (CM) Points

Certification Maintenance Points are available to Certified Industrial Hygienists who complete courses and are awarded points under the ABIH maintenance of certification program. Visit the ABIH website for the most current information.

Board of Certified Safety Professionals (BCSP) Continuance of Certification (COC) Points

Continuation of Certification (COC) Points are available to certified safety professionals who complete courses in which at least half of the content is devoted to safety, health, or environmental topics. The number of COC points available from the BCSP can be calculated using the BCSP guidelines.

Requests for Records/ Transcripts Policy

We maintain a database of participants who have successfully completed courses and can forward that information as requested. As we are not the awarding body, we do not maintain records of ABIH CM points or BCSP continuance of certification points. Please contact those organizations directly for information about their CEU policies.

For a written request:

A written request from the student whose records/transcripts are being sought must include the name of the student, course number(s), and dates of each course session for which a record is desired.

Mail request to:
OSHA Training Institute Education Center
Chabot-Las Positas Community College District
7600 Dublin Blvd, Suite 140, Dublin, CA 94568

Course Descriptions (Listed alphabetically by title)

OSHA 7200

Bloodborne Pathogens Exposure Control for Healthcare Facilities

How to develop a bloodborne pathogens exposure plan for healthcare facilities using a step-by-step approach, including an introduction to the OSHA Bloodborne Pathogens Standard, the exposure control plan, exposure determination, methods of control, vaccinations and evaluations, training and information and record keeping.

Prerequisites: None

Days: 1

Fee: \$250

Cal/OSHA 30-Hour Outreach Training for Construction

Our 30-Hour Cal/OSHA course covers standards and requirements as they apply to the construction industry and teaches safety awareness which helps in recognizing and reducing the risks of job site hazards. This interactive training is intended as an orientation and covers safety and health hazards workers may face on construction work sites. This course puts emphasis on hazard identification, avoidance, control and prevention and is intended for supervisors or workers who have some safety responsibility. Attendees will receive a Cal/OSHA 30-Hour Construction Outreach course completion card and certificate.

Prerequisites: None

Days: 4

Fee: \$675



Cal/OSHA 30-Hour Outreach Training for General Industry

Our 30-Hour Cal/OSHA course covers standards and requirements as they apply to general industry and teaches safety awareness which helps in recognizing and reducing the risks of work site hazards. This interactive training is intended as an orientation and covers safety and health hazards workers may face in the workplace. This course puts emphasis on hazard identification, avoidance, control and prevention and is intended for supervisors or workers who have some safety responsibility. Attendees will receive a Cal/OSHA 30-Hour General Industry Outreach course completion card and certificate.

Prerequisites: None

Days: 4

Fee: \$675

OSHA 5119

Cal/OSHA Standards for General Industry

This course is designed for personnel interested in learning more about Cal/OSHA general industry standards and policies. Course topics include Title 8 general industry standards and compliance, topics required in the 10- and 30- hour programs as well as those which are most hazardous in general industry, Injury and Illness Prevention Program and Cal/OSHA training guidelines.

Prerequisites for Outreach Trainers: Outreach Trainers seeking to achieve the Cal/OSHA general industry authorized trainer designation must have completed OSHA 501 Trainer Course in OSHA Standards for General Industry or OSHA 503 Update for General Industry Outreach Trainers.

Days: 4

Fee: \$750

OSHA 5109**Cal/OSHA Standards for the Construction Industry**

This course is designed for personnel interested in learning about Cal/OSHA Title 8 Construction standards and policies. Course topics include Title 8 construction industry standards and compliance, topics required in the 10- and 30- hour programs as well as those that are the most hazardous in the construction industry, Injury and Illness Prevention Program and Cal/OSHA training guidelines.

Prerequisites for Outreach Trainers: Outreach Trainers seeking to achieve the Cal/OSHA construction authorized trainer designation must have completed OSHA 500 Trainer Course in OSHA Standards for Construction or OSHA 502 Update for Construction Industry Outreach Trainers.

Days: 4
Fee: \$750

OSHA 5029**Cal/OSHA Update for Construction Industry Outreach Trainers**

This course updates the OSHA 5109 Cal/OSHA Standards for the Construction Industry course. Students will learn about the most significant changes within Cal/OSHA that affect the construction industry. Course topics include updates on the Cal/OSHA strategic plan, enforcement and consultation, procedural changes, new and proposed Cal/OSHA standards as they relate to the construction industry, navigation of the Cal/OSHA website, and availability of publications and resources. This course continues the student's authorization to teach both the 10- and 30-hour Cal/OSHA Construction Industry Outreach Program.

Prerequisites: None
Days: 1
Fee: \$250

OSHA 5039**Cal/OSHA Update for General Industry Outreach Trainers**

This course updates the OSHA 5119 Cal/OSHA Standards for General Industry course. Students learn about the most significant changes with Cal/OSHA that affect general industry. Course topics include updates on the Cal/OSHA strategic plan, enforcement and consultation, procedural changes, new and proposed Cal/OSHA standards as they relate to general industry, navigation of the Cal/OSHA website, and availability of publications and resources.

Prerequisites: None
Days: 1
Fee: \$250

OSHA 6005**Collateral Duty Course for Other Federal Agencies**

This course introduces federal agency collateral duty safety and health personnel to the OSH Act, Executive Order 12196, 29 CFR 1960 and 29 CFR 1910. The training enables participants to recognize basic safety and health hazards in the workplace and effectively assist agency safety and health officers with inspection and abatement efforts.

Prerequisites: None
Days: 4
Fee: \$750

Consider Becoming an Outreach Trainer

Here are the three easy steps:

1. Five Years of Industry Experience
2. Complete the OSHA Standards Course for your industry
3. Complete the OSHA Trainer Course for your industry

Learn more on page 9

OTC 304**Confined Space Rescue Operations (40-hour)**

This course teaches students how to conduct a variety of rescues in permit required confined spaces. Students will learn how to develop and update pre-plans, conduct practice rescues, inspect and maintain equipment, and coordinate with other emergency responders. This training will primarily consist of hands-on field training and is 40 hours in length for five (5) eight hour days.

Prerequisites: Before attending this class, students need to have completed OSHA 2265 Permit Required Confined Space Entry. In addition, it is recommended that students have had previous training in first aid/CPR, respiratory protection and hazardous materials.

Days: 5
Fee: \$850

OSHA 7415**Construction Industry Hazards and Prevention Strategies**

OSHA requirements and guidelines applicable to construction industry activities and operations, including an awareness level necessary to be able to describe major construction hazards and prevention strategies. Topics include the recognition of hazards in the construction industry, prevention strategies, OSHA guidelines and available resources.

Prerequisites: None
Days: 2
Fee: \$375

OSHA 5600**Disaster Site Worker Trainer**

This course prepares experienced Outreach Training Program trainers to present OSHA 7600 Disaster Site Worker Course, intended for second responders (those arriving hours or days after the event). Course topics include the National Response Framework, the Incident Command System, disaster work zone safety,

respiratory protection, communication issues, applying elements of successful adult training programs, and knowledge, skills, and attitudes to awareness training about safety and health standards at natural and human-made disaster sites. Students are provided the opportunity to practice knowledge and skills through discussion, planned exercises, demonstrations, and presentations. Completion of this course authorizes students to become trainers in the Disaster Site Worker Outreach Training Program, to conduct the OSHA 7600 Disaster Site Worker Course, and to issue cards to participants after verifying course completion.

Prerequisites: OSHA 500 Trainer course in OSHA Standards for the Construction Industry or OSHA 501 Trainer Course in OSHA Standards for General Industry, three (3) years safety training experience, and the completion of the 40-hour HAZWOPER training. Outreach Training Program trainers are required to attend OSHA 5602 Update for Disaster Site Worker Trainer course at least every four (4) years to maintain their outreach training program trainer authorization.

Days: 4
Fee: \$765

OTC 306**Electrical Safety for Qualified Workers (NFPA 70E)**

This course is designed for individuals who work on or near energized electrical systems and complies with the requirements of Cal OSHA (at or less than 600 volts) and NFPA 70E, Standard for Electrical Safety in the Workplace. Emphasis is placed on standards updates and on areas that are the most hazardous.

Prerequisites: None
Days: 1
Fee: \$325

OSHA 3095**Electrical Standards**

A survey of OSHA's Electrical Standards and the hazards associated with electrical installations and equipment. Topics include single- and three-phase systems, cord- and plug-connected and fixed equipment, grounding, ground fault circuit interrupters, and safety-related work practices. Emphasis is placed on electrical hazard recognition and OSHA policies and procedures. Students will receive instruction on the safe and correct use of their electrical testing equipment. This is a 4-day class.

Prerequisites: None
Days: 4
Fee: \$750

EM 385-1-1**EM 385-1-1 Construction Safety and Health Awareness Course for Contractors**

This course covers safety as well as the procedures and requirements as set forth by the U.S. Army Corps of Engineers Safety Health Requirements Manual. Learn how to properly prepare a site-specific Accident Prevention Plan (APP), site safety health officer's qualifications and responsibilities, Activity Hazard Analysis (AHA) forms and their development, site personnel training, incident response and reporting procedures, jobsite auditing, and hazard communication. Contractors working at military bases and U.S. Army Corps of Engineers projects must comply with the requirements of USACE EM 385-1-1. This 40-hour course provides instruction about how contractors can comply with EM 385-1-1 standards. It is very interactive and includes many of tools to assist contractors with EM 385-1-1 compliance.

Prerequisites: None
Days: 4
Fee: \$750

Check our website
for the latest courses
and schedule!
www.osha4you.com

OSHA 7105**Evacuation and Emergency Planning**

Preparing for emergencies is a basic principle of workplace safety and health. Participants will learn reasons for emergency action plans and fire prevention plans and when they are required for a workplace; elements of a good evacuation plan and the OSHA requirements for plans; and features of design and maintenance of good exit routes.

Prerequisites: None
Days: 1
Fee: \$250

OSHA 3015**Excavation, Trenching and Soil Mechanics**

Students learn about practical soil mechanics and the relationship to the stability of shored and unshored slopes and walls of excavations. Various types of shoring including hydraulic and wood timbers are covered. Testing methods are demonstrated and a field exercise is conducted, allowing students to use instruments such as penetrometers, torvane shears, and engineering rods.

Prerequisites: None
Days: 3
Fee: \$675

OSHA 7405**Fall Hazard Awareness for the Construction Industry**

The focus of this course is to identify, evaluate, and prevent or control fall hazards at construction sites. The course focuses on falls to a lower level not falls to the same level resulting from slips and falls. The target audience is the small construction employer, business owner, or manager who would like to obtain information about fall hazards found in the workplace. The training is also suitable for employees and employee representatives. Topics include identifying, analyzing, and preventing fall hazards as well as OSHA resources.

Prerequisites: None
Days: 1
Fee: \$250

OSHA 3115**Fall Protection**

An overview of state-of-the-art technology for fall protection and current OSHA requirements. Topics covered include the principles of fall protection, the components of fall arrest systems, the limitations of fall arrest equipment and OSHA policies regarding fall protection. Course features a field exercise demonstrating fall protection equipment.

Prerequisites: None
Days: 3
Fee: \$675

OSHA 2015**Hazardous Materials**

Covers OSHA General Industry Standards for hazardous materials handling and integrates other national consensus standards that relate to hazardous materials, including flammable and combustible liquids, compressed gases, LP-gases, and cryogenic liquids. Related processes such as spraying and dipping are included.

Prerequisites: None
Days: 4
Fee: \$750

OSHA 5810**Hazard Recognition and Standards for On-Shore Oil and Gas Exploration and Production**

This course provides essential information for employees and employers to protect themselves by developing the knowledge and skills to anticipate, recognize, evaluate and control hazards common to the on-shore oil and gas exploration and production industry. This includes work sites associated with the on-shore exploration and production oil and gas industry including, but not limited to construction, drilling, completion, well servicing, production, product gathering and processing, and product transmission.

Prerequisites: None
Days: 4
Fee: \$750

**OTC 204****HAZWOPER, 40-Hour (Hazardous Waste Operations and Emergency Response)**

The 40-Hour HAZWOPER course is designed to ensure awareness and promote safety among employees who may be exposed to chemical hazards in their workplace. The objective is to ensure that employees operate in the safest possible manner in situations where contact with potentially hazardous materials is likely.

This class is designed to provide students with written and hands-on instruction in hazardous waste operations and emergency response (HAZWOPER) as it relates to chemical and physical exposures in industrial and field settings. This course satisfies the requirement for generalized employee training under OSHA (1910.120) and (1926).

Prerequisites: None
Days: 5
Fee: \$825

OTC 202**HAZWOPER Refresher, 8-Hour (Hazardous Waste Operations and Emergency Response)**

8-Hour HAZWOPER Refresher is designed for hazardous waste operations and emergency response workers who must satisfy their annual 8-hour refresher training course requirement.

Prerequisites: None
Days: 1
Fee: \$250

OSHA 7205**Health Hazard Awareness**

Introduction to common health hazards that are encountered in the workplace, including exposure to chemicals, asbestos, silica and lead, identification of hazards, sources of exposure, health hazard information, evaluation of exposure and engineering and work practice controls. The course is an awareness course for employers and employees.

Prerequisites: None

Days: 1

Fee: \$250

OSHA 7505**Introduction to Incident (Accident) Investigation**

Introduction to Accident Investigation provides an introduction to basic accident investigation procedures and describes accident analysis techniques. The goal of the course is to help participants gain the basic skills necessary to conduct an effective accident investigation at their workplace. The target audience is the small employer, manager, employee or employee representative who, as part of a firm's safety and health system, would be involved in conducting accident and/or near-miss investigations.

Prerequisites: None

Days: 1

Fee: \$250

OSHA 7100**Introduction to Machinery and Machine Safeguarding**

The main focus of this course is to increase the participant's knowledge and skill in proper machine safeguarding techniques, and to highlight the benefits of guarding various types of machinery. It is the employer's responsibility to identify and select the safeguard necessary to protect employees and others in the work area, as well as provide appropriate training in safe work practices. Knowing when and how to properly safeguard machinery can reduce or eliminate the potential for accidents and injuries.

Prerequisites: None

Days: 1

Fee: \$250

**OSHA 7510****Introduction to OSHA for Small Business**

This course covers an introduction to the Occupational Safety and Health Administration (OSHA) and the OSH Act for owners and managers of small businesses. Course topics include an introduction to OSHA, OSHA Standards, the inspection process, implementing a safety and health program, worker training requirements and assistance available to small businesses. Upon course completion students will understand OSHA operations and procedures and how to work with OSHA to prevent or reduce injuries and illnesses in their workplace.

Prerequisites: None

Days: .5 (half-day)

Fee: \$250

OSHA 7500**Introduction to Safety and Health Management**

This introductory course addresses the four core elements of an effective safety and health program with strategies & techniques that are critical to each element's proper management. The course is designed for the small employer, business owner or manager designated with the responsibility to develop and manage a safety and health program or system.

Prerequisites: None

Days: 1

Fee: \$250

OSHA 7115**Lockout/Tagout - Controlling Hazardous Energy to Prevent Workplace Injury**

Focuses on the roles and responsibilities of the employer to develop and implement an energy control program, or lock-out/tag-out (LOTO) for the protection of workers while performing servicing and maintenance activities on machines and equipment. Students will learn how to detect hazardous conditions and implement control measures as they relate to the control of hazardous energy, written isolation procedures, training for authorized and affected employees, and periodic inspection of energy control procedures. Topics include the understanding and application of definitions relating to OSHA's Control of Hazardous Energy Standard, types of hazardous energy, energy isolation options and written program requirements.

Prerequisites: None

Days: 1

Fee: \$250

OSHA 2045**Machinery and Machine Guarding Standards**

This class familiarizes the student with various types of common machinery and their related safety standards, and the control of hazardous energy sources

(lockout/tagout). The course presents an approach to machinery inspection that enables participants to recognize hazards and to provide options to achieve abatement, including those for mechanical motions and actions created by points of operation and other machinery processes. Includes practice on identifying and mitigating machinery hazards.

Prerequisites: None

Days: 4

Fee: \$750

OSHA 7410**Managing Excavation Hazards**

Introductory class on excavation requirements. Topics include the understanding and application of definitions relating to OSHA's Excavation Standard (Subpart P), excavation hazards and control measures, soil analysis techniques, protective system requirements and emergency response.

Prerequisites: None

Days: 1

Fee: \$225

OSHA 5402**Maritime Industry Trainer Update Course**

Students will learn to demonstrate continued professional development in their field by applying effective adult learning principles and interactive training techniques to clearly identify, define and explain maritime industry hazards and acceptable corrective measures in accordance with the 29 CFR 1915, 1917, 1918 and 1919 OSHA Maritime Standards as they continue to teach 10-hour and 30-hour OSHA outreach courses.

Note: Outreach Trainers are required to attend this course once every four (4) years to maintain their authorized trainer status. Prior to registration, students must provide a copy of their current trainer card for validation and complete a prerequisite form.

Prerequisites: OSHA 5400 Trainer Course for the Maritime Industry

Days: 3

Fee: \$675

Cal/OSHA Courses

The OSHA Training Institute Education Center specializes in providing Cal/OSHA courses specific to California Title 8 regulations.

Learn more about the Cal/OSHA Courses on pages 13-14.

OSHA 7400**Noise in the Construction Industry**

Covers OSHA's Hearing Conservation Program for Construction Workers. Includes hands-on experience with noise meters and dosimeters, as well as materials and guidance for training the workforce.

Prerequisites: None

Days: 1

Fee: \$250

OSHA 6015 (formerly 6010)**Occupational Safety and Health Course for Other Federal Agencies**

This course covers the recognition, evaluation, and control of safety and health hazards for other federal agencies. Course topics include the OSH Act, Executive Order 12196, 29 CFR 1960 and 1920 General Industry Standards, understanding the Federal Safety and Health program regulations, identification of safety and health hazards, controlling hazards, hazard abatement, and construction focus four topics. This course is intended for federal employees responsible for occupational safety and health programs at their respective agencies. Upon course completion students will have the ability to apply OSHA General Industry Standards and regulations pertaining to federal agencies, identify and control safety and health hazards, and hazard abatement.

Prerequisites: None

Days: 10

Fee: TBD

OSHA 521**OSHA Guide to Industrial Hygiene**

Industrial hygiene practices and related OSHA regulations and procedures. Topics include permissible exposure limits, OSHA health standards, respiratory protection, engineering controls, hazard communication, OSHA sampling procedures and strategy, workplace health program elements and other industrial hygiene topics. The course features hands-on practice in health hazard recognition and OSHA health standards requirements.

Prerequisites: None

Days: 4

Fee: \$750

OTC 107**OSHA 30-Hour Outreach Training for Construction**

Our 30-Hour Outreach course covers specific OSHA standards and requirements as they apply to the construction industry and teaches safety awareness which helps in recognizing and reducing the risks of job site hazards. This interactive training is intended for entry level workers as an orientation and covers safety and health hazards workers may face on construction work sites. Our course puts emphasis on hazard identification, avoidance, control and prevention. This training is intended for people who have some safety responsibility. Attendees will receive a 30-hour OSHA Construction Outreach card and a certificate of attendance. There is a \$8 processing fee for the OSHA card to be collected during the class.

Prerequisites: None

Days: 4

Fee: \$675

OTC 110**OSHA 30-Hour Outreach Training for General Industry**

Our 30-Hour Outreach course covers specific OSHA standards and requirements as they apply to general industry work sites and teaches safety awareness which helps in recognizing and reducing the risks of hazards. This interactive training is intended for entry level workers as an orientation and covers safety and health hazards workers may face at general industry work sites. Our course puts emphasis on hazard identification, avoidance, control and prevention. This training is intended for people who have some safety responsibility. Attendees will receive a 30-hour OSHA General Industries Outreach card and a certificate of attendance. There is a \$8 processing fee for the OSHA card to be collected during the class.

Prerequisites: None

Days: 4

Fee: \$675

OSHA 511**OSHA Standards for General Industry**

This course covers federal OSHA policies, procedures and standards, as well as general industry safety and health principles and is the prerequisite course to the OSHA 501 Trainer Course for General Industry. Topics include scope and application of the OSHA General Industry Standards. Special emphasis is placed on those areas that are the most hazardous in non-construction industries, using OSHA Standards as a guide. Learn to apply the appropriate federal OSHA Standard that applies to hazards in general industry.

Prerequisites: None

Days: 4

Fee: \$750

OSHA 510**OSHA Standards for the Construction Industry**

This course covers federal OSHA policies, procedures, and standards, as well as construction safety and health principles and is the prerequisite to the OSHA 500 Outreach Trainer for the Construction Industry. Topics include scope and application of the OSHA Construction Standards. Special emphasis is placed on those areas that are the most hazardous, using OSHA Standards as a guide. Learn to apply the appropriate federal OSHA Standard that applies to hazards in the construction industry.

Prerequisites: None

Days: 4

Fee: \$750

3 Ways to Register

Online: www.osha4you.com

Phone: 866.936.OSHA (6742)

Mail: 7600 Dublin Blvd.
Suite 140
Dublin, CA 94568

“Our instructor was very professional, knowledgeable, and friendly.”

OSHA 5410**OSHA Standards for the Maritime Industry**

Participants in OSHA 5410 will learn the OSHA policies, procedures, and standards for the maritime industry as well as safety and health principles. Each section of the OSHA Maritime Standards will be covered. Special emphasis will be placed on those areas that are more hazardous, using OSHA Standards as a guide. OSHA 5410 is the prerequisite course to the OSHA 5400 Trainer Course for the Maritime Industry.

Prerequisites: None
Days: 5
Fee: \$875

OSHA 7000**OSHA Training Guidelines for Safe Patient Handling**

Course will focus on analyzing and identifying hazardous ergonomic jobs in nursing homes and developing practical solutions. Featured topics include creating a protocol for resident assessment and implementing solutions including work practices and engineering solutions.

Prerequisites: None
Days: 1
Fee: \$250

OSHA 7210**Pandemic Influenza Preparedness**

This course covers recognizing hazards and risks associated with a pandemic influenza event and developing strategies to assist a business, community, or family with realistic preparation for a pandemic event. Course topics include potential impact of a pandemic influenza event on a business and community, critical elements of a preparedness plan, and realistic strategies for supporting continuity of business. This course offers information on strategies that can be used to control the spread of the virus,



minimizing exposure to employees and family, and resources available from OSHA and other government agencies. Upon course completion, students will have the ability to prepare for a pandemic to assure business continuity and employee safety.

Prerequisites: None
Days: 1
Fee: \$250

OSHA 2264**Permit Required Confined Space Entry**

How to recognize, evaluate, prevent and abate safety and health hazards associated with confined space entry. Technical topics include the recognition of confined space hazards, basic information about instrumentation used to evaluate atmospheric hazards, and ventilation techniques. This course features practice with permit entry classification and program evaluation.

Students are advised to bring the following - hard hat, gloves, safety glasses, boots, work type clothes, hearing protection, and a personal water bottle.

Prerequisites: None
Days: 3
Fee: \$675

OSHA 2255**Principles of Ergonomics**

Using ergonomic principles to recognize, evaluate, and control work place conditions that cause or contribute to musculoskeletal and nerve disorders. Topics include work physiology, anthropometry, musculoskeletal disorders, use of video display terminals and risk factors such as vibration, temperature, material handling, repetition and lifting and transfers in health care. Course emphasis is on industrial case studies covering analysis and design of work stations and equipment, practice sessions in manual lifting and coverage of current OSHA compliance policies.

Prerequisites: None
Days: 3
Fee: \$675

OSHA 3085**Principles of Scaffolding**

This course covers the requirements for construction and the safe construction and use of scaffolding using the OSHA construction scaffold standard as a guide. Course topics include hazards associated with scaffold design, assembly, disassembly and use, types of scaffolds, determining scaffold capacity, employee qualifications and training, and maintenance, repair, and inspection requirements. Students will participate in workshops to reinforce concepts of safe scaffolding. Upon course completion students will have the ability to identify the types of scaffolds and their components, determine safe assembly, use, and disassembly, and recognize common violations of OSHA Standards.

Prerequisites: None
Days: 3
Fee: \$675

OSHA 7005**Public Warehousing and Storage**

The course is designed for warehouse workers and will focus on many hazards and injuries that are likely to be encountered in warehouse operations. It has been shown that warehousing has become an increasingly hazardous area in which to work. OSHA has identified Public Storage and Warehousing as one of seven industries with a high lost time claims rate. Injuries may occur from forklifts; material handling and lifting; exposure to hazardous substances; and slips, trips and falls. The course will discuss: powered industrial trucks; material handling/lifting/ergonomics; hazard communication; walking and working surfaces; and exit routes and fire protection.

Prerequisites: None
Days: 1
Fee: \$250

OSHA 7845**Recordkeeping Rule Seminar**

Identification of responsibilities for posting certain records, maintaining records of illnesses and injuries and reporting specific cases to OSHA. Participants who successfully complete this course will be able to identify OSHA requirements and complete OSHA's forms 300, 300A and 301.

Prerequisites: None
Days: .5 (half-day)
Fee: \$175



OSHA 2225**Respiratory Protection**

Requirements for establishing, maintaining and monitoring a respiratory protection program, including terminology, OSHA Standards, NIOSH certification and medical evaluation recommendations. Course highlights incorporate hands-on experience with respirator selection, qualitative fit testing, and the use of a large array of respiratory and support equipment for training.

Prerequisites: None

Days: 4

Fee: \$750

OTC 308**Safety Inspection Techniques**

Safety and health inspections are shown to be essential parts of the hazard control process. This course will concentrate on how inspections are conducted and how the information is used to improve safety and health. You will learn the most commonly used safety inspection standards, tools and techniques in this course and learn an organized approach to inspecting and auditing projects to insure OSHA compliance and injury prevention. Students will perform an inspection during a class field trip and will prepare a final inspection report. Students are required to bring appropriate Personal Protective Equipment (PPE) to the course including hard hats, safety vests, safety glasses, work boots, etc.

Prerequisites: None

Days: 3

Fee: \$675

**OSHA 7215****Silica in Construction, Maritime and General Industries**

This course covers the development and implementation of controls and strategies to prevent or mitigate silica exposures in construction, maritime, and general industries. Course topics include describing the requirements of OSHA's Respirable Crystalline Silica standards and recognizing the hazards and risks, assessment options, and exposure control measures associated with silica exposure.

Prerequisites: None

Days: 1

Fee: \$250

OSHA 501**Trainer Course in OSHA Standards for General Industry**

This course is designed for those who are interested in teaching the 10-hour and 30-hour general industry safety and health outreach classes to employees and other interested groups. Special emphasis is placed on those topics that are required in the 10-hour and 30-hour classes as well as on those that are the most hazardous in non-construction industries. Course participants learn effective instructional approaches and the successful use of visual aids and handouts. This course authorizes the student to become a trainer in the Outreach Program and to conduct both 10-hour and 30-hour general industry safety and health courses, and to issue cards to participants verifying course completion.

Prerequisites: OSHA 511 OSHA Standards for General Industry and five years of general industry safety experience. A college degree in occupational safety and health, a Certified Safety Professional (CSP), or a Certified Industrial Hygienist (CIH) designation may be substituted for two (2) years of experience.

Days: 4

Fee: \$750

OSHA 500**Trainer Course in OSHA Standards for the Construction Industry**

This course is designed for those who are interested in teaching the 10-hour and 30-hour construction safety and health outreach classes to employees and other interested groups. Special emphasis is placed on those topics that are required in the 10-hour and 30-hour classes as well as on those that are the most hazardous in the construction industry. Course participants learn effective instructional approaches and the successful use of visual aids and handouts. This course authorizes the student to become a trainer in the Outreach Program and to conduct both 10-hour and 30-hour construction safety and health courses, and to issue cards to participants verifying course completion.

Prerequisites: OSHA 510 OSHA Standards for the Construction Industry and five years of construction safety experience. A college degree in occupational safety and health, a Certified Safety Professional (CSP), or a Certified Industrial Hygienist (CIH) designation may be substituted for two (2) years of experience.

Days: 4

Fee: \$750

OSHA 5400**Trainer Course in OSHA Standards for the Maritime Industry**

For those who are interested in teaching the 10-hour and 30-hour maritime safety and health outreach classes to employees and other interested groups. Course participants learn effective instructional approaches and the successful use of visual aids and handouts. This course authorizes the student to become

a trainer in the Maritime Outreach Trainer Program and to conduct both 10- and 30-hour maritime safety and health courses for shipyard employment, marine terminals, and longshoring, and to issue cards to participants verifying course completion.

Prerequisites: OSHA 5410 Occupational Safety and Health Standards for the Maritime Industry and two years maritime industry experience and **at least one of the following:**

- Two years of occupational safety and health experience (with a broad focus) in any industry
- A degree in occupational safety and health from an accredited college or university
- Certified Safety Professional (CSP) designation
- Certified Industrial Hygienist (CIH) designation
- Certified Marine Chemist (CMC) designation
- Certified Safety Health Manager (CSHM) designation
- OTC Certified Safety and Health Official (Level III)

Days: 4

Fee: \$795

OTC 403**Trainer Course in Permit Required Confined Space Entry**

This course is designed for those who are interested in teaching a permit required confined space awareness-level course to employees and other interested groups. Course participants learn application of standards, as well as effective instructional approaches and the successful use of visual aids and handouts.

Prerequisites: OSHA 2264 Permit Required Confined Space Entry

Days: 2

Fee: \$425

“The group interaction and discussion was the most valuable part of the course.”

OTC 302

Training Techniques for the Safety Professional

This 2-day class is for both the new and the experienced trainer who wants to learn new teaching skills. It focuses on topics such as effective instruction and presentation techniques, curriculum design, adult learning theory, and coaching skills. Our goal is to take the safety subject matter expert, and provide them with additional tools that they can use to deliver training content to workers in a way that makes it fun to learn. Participants will have time to practice the skills being addressed. It is strongly recommended that attendees bring a laptop to class. If you are unable to do so, please contact us to make other arrangements.

Prerequisites: None
Days: 2
Fee: \$495

Don't Wait to Renew Your Outreach Trainer Status!

Limited renewal classes are available. Every 4 years outreach trainers are required to renew their trainer cards. See pages 13-14 and 26-27 for course details.

OSHA 7300

Understanding OSHA's Permit Required Confined Space Standard

An introduction to the requirements of OSHA's Permit Required Confined Space Standard, 29 CFR 1910.146. It is designed for small employers or a designated representative (line supervisor or manager) with the responsibility to develop a permit space program.

Prerequisites: None
Days: 1
Fee: \$250

OSHA 502

Update for Construction Industry Outreach Trainers

A refresher course for those who have completed the OSHA 500 Construction Industry Outreach Trainer course and who are authorized trainers in the OSHA Outreach Training Program. It provides an update on such topics as OSHA Construction Standards, policies, and regulations. Students in OSHA 502 must prepare a presentation on an assigned OSHA construction industry outreach topic individually or as part of a group, and successfully pass a written exam at the end of the course to renew certification.

Prerequisites: OSHA 500 Construction Industry Outreach Trainer
Days: 3
Fee: \$525

OSHA 5602

Update for Disaster Site Worker Trainer Course

This course is intended to update the authorized Disaster Site Worker Trainer with new technical and regulatory information related to disaster response and the role of OSHA in coordinating occupational safety and health in the National Response Framework. Participants will have the opportunity to share "lessons learned" from teaching OSHA 7600 Disaster Site Worker Course.

Prerequisites: OSHA 5600 Disaster Site Worker Trainer Course.
Days: 1
Fee: \$250

OSHA 503

Update for General Industry Outreach Trainers

A refresher course for those who have completed OSHA 501 General Industry Outreach Trainer Course and who are authorized trainers in the OSHA Outreach Training Program. It provides an update on OSHA General Industry Standards and OSHA policies. Students in OSHA 503 must prepare a presentation on an assigned OSHA general industry outreach topic individually or as part of a group, and successfully pass a written exam at the end of the course to renew certification.

Prerequisites: OSHA 501 General Industry Outreach Trainer Course
Days: 3
Fee: \$525

OTC 310

Workplace Violence Prevention and Survival

Workplace violence is a definitive, recognized hazard that must be addressed by all businesses. This 3-day high energy, interactive skills development class is designed to work with your organization's written policy in an effort to give your staff a tactical edge in preventing and surviving workplace violence. Using a common sense approach to safety, students will learn a wide variety of techniques and strategies they can use to make their workplace a safer environment creating a "survival attitude."

Prerequisites: None
Days: 3
Fee: \$675



OSHA Training Institute Education Center at Chabot-Las Positas Community College District students may qualify for tuition discounts and apply OSHA courses towards degree programs through Columbia Southern University.

Contact Ernie Smith
 Outreach Representative
 Columbia Southern University
 (800) 977-8449 ext.1261
 ernie.smith@columbiasouthern.edu
 www.columbiasouthern.edu



2019 Schedule by Course

Classes are added regularly. For the most up-to-date information please visit our website www.osha4you.com.

Bloodborne Pathogens Exposure Control for Healthcare Facilities - OSHA 7200

Start Date	End Date	Start Time	End Time	Site/Location
May 17, 2019	May 17, 2019	8:00 AM	5:00 PM	Dublin, CA

Cal/OSHA 30-Hour Outreach Training for General Industry

Start Date	End Date	Start Time	End Time	Site/Location
January 22, 2019	January 25, 2019	8:00 AM	5:00 PM	Santa Rosa, CA
August 5, 2019	August 8, 2019	8:00 AM	5:00 PM	Santa Rosa, CA

Cal/OSHA Standards for General Industry - OSHA 5119

Start Date	End Date	Start Time	End Time	Site/Location
March 9, 2019	March 17, 2019	8:00 AM	5:00 PM	Dublin, CA
July 22, 2019	July 25, 2019	8:00 AM	5:00 PM	Sacramento, CA
September 3, 2019	September 6, 2019	8:00 AM	5:00 PM	Dublin, CA
November 4, 2019	November 7, 2019	8:00 AM	5:00 PM	Ventura/Oxnard, CA

Cal/OSHA Standards for the Construction Industry - OSHA 5109

Start Date	End Date	Start Time	End Time	Site/Location
February 4, 2019	February 7, 2019	8:00 AM	5:00 PM	Ventura/Oxnard, CA
March 30, 2019	April 7, 2019	8:00 AM	5:00 PM	Dublin, CA
April 29, 2019	May 2, 2019	8:00 AM	5:00 PM	Sacramento, CA
June 3, 2019	June 6, 2019	8:00 AM	5:00 PM	San Luis Obispo, CA
August 19, 2019	August 22, 2019	8:00 AM	5:00 PM	Dublin, CA
October 5, 2019	October 13, 2019	8:00 AM	5:00 PM	Sacramento, CA
November 4, 2019	November 7, 2019	8:00 AM	5:00 PM	Dublin, CA
November 18, 2019	November 21, 2019	8:00 AM	5:00 PM	Fresno, CA

Cal/OSHA Update for Construction Industry Outreach Trainers - OSHA 5029

Start Date	End Date	Start Time	End Time	Site/Location
March 29, 2019	March 29, 2019	8:00 AM	5:00 PM	Dublin, CA
May 31, 2019	May 31, 2019	8:00 AM	5:00 PM	Fresno, CA
October 6, 2019	October 6, 2019	8:00 AM	5:00 PM	Dublin, CA
December 5, 2019	December 5, 2019	8:00 AM	5:00 PM	Sacramento, CA

Cal/OSHA Update for General Industry Outreach Trainers - OSHA 5039

Start Date	End Date	Start Time	End Time	Site/Location
March 21, 2019	March 21, 2019	8:00 AM	5:00 PM	Sacramento, CA
July 14, 2019	July 14, 2019	8:00 AM	5:00 PM	Dublin, CA
November 4, 2019	November 4, 2019	8:00 AM	5:00 PM	Dublin, CA

Collateral Duty Course for Other Federal Agencies - OSHA 6005

Start Date	End Date	Start Time	End Time	Site/Location
June 10, 2019	June 13, 2019	8:00 AM	5:00 PM	Dublin, CA
June 17, 2019	June 20, 2019	8:00 AM	5:00 PM	Ventura/Oxnard, CA
September 16, 2019	September 19, 2019	8:00 AM	5:00 PM	Reno, NV
September 23, 2019	September 26, 2019	8:00 AM	5:00 PM	Honolulu, HI

Disaster Site Worker Trainer - OSHA 5600

Start Date	End Date	Start Time	End Time	Site/Location
June 10, 2019	June 13, 2019	8:00 AM	5:00 PM	Sacramento, CA
August 6, 2019	August 9, 2019	8:00 AM	5:00 PM	Dublin, CA
November 12, 2019	November 15, 2019	8:00 AM	5:00 PM	Dublin, CA

Electrical Safety for Qualified Workers (NFPA 70E) - OTC 306

Start Date	End Date	Start Time	End Time	Site/Location
February 5, 2019	February 5, 2019	8:00 AM	5:00 PM	Sacramento, CA
April 29, 2019	April 29, 2019	8:00 AM	5:00 PM	Fresno, CA
June 28, 2019	June 28, 2019	8:00 AM	5:00 PM	Sacramento, CA

Electrical Standards - OSHA 3095

Start Date	End Date	Start Time	End Time	Site/Location
February 19, 2019	February 22, 2019	8:00 AM	5:00 PM	Santa Clara, CA
February 25, 2019	February 28, 2019	8:00 AM	5:00 PM	Honolulu, HI
April 8, 2019	April 11, 2019	8:00 AM	5:00 PM	Ventura/Oxnard, CA
May 6, 2019	May 9, 2019	8:00 AM	5:00 PM	Dublin, CA
August 3, 2019	August 11, 2019	8:00 AM	5:00 PM	Dublin, CA
September 16, 2019	September 19, 2019	8:00 AM	5:00 PM	Sacramento, CA
October 28, 2019	October 31, 2019	8:00 AM	5:00 PM	Fresno, CA
November 12, 2019	November 15, 2019	8:00 AM	5:00 PM	Reno, NV

Evacuation and Emergency Planning - OSHA 7105

Start Date	End Date	Start Time	End Time	Site/Location
April 29, 2019	April 29, 2019	8:00 AM	5:00 PM	Reno, NV
July 10, 2019	July 10, 2019	8:00 AM	5:00 PM	Sacramento, CA
August 23, 2019	August 23, 2019	8:00 AM	5:00 PM	Honolulu, HI
September 5, 2019	September 5, 2019	8:00 AM	5:00 PM	Hilo, HI
September 9, 2019	September 9, 2019	8:00 AM	5:00 PM	Redding, CA
September 11, 2019	September 11, 2019	8:00 AM	5:00 PM	Dublin, CA

Excavation, Trenching and Soil Mechanics - OSHA 3015

Start Date	End Date	Start Time	End Time	Site/Location
January 28, 2019	January 30, 2019	8:00 AM	5:00 PM	Fresno, CA
April 1, 2019	April 3, 2019	8:00 AM	5:00 PM	Redding, CA
April 15, 2019	April 17, 2019	8:00 AM	5:00 PM	Sacramento, CA
May 20, 2019	May 22, 2019	8:00 AM	5:00 PM	Dublin, CA
August 19, 2019	August 21, 2019	8:00 AM	5:00 PM	Reno, NV
September 27, 2019	September 29, 2019	8:00 AM	5:00 PM	Dublin, CA
October 9, 2019	October 11, 2019	8:00 AM	5:00 PM	San Luis Obispo, CA
November 4, 2019	November 6, 2019	8:00 AM	5:00 PM	Sacramento, CA

Fall Hazard Awareness for the Construction Industry - OSHA 7405

Start Date	End Date	Start Time	End Time	Site/Location
April 8, 2019	April 8, 2019	8:00 AM	5:00 PM	Hilo, HI
May 10, 2019	May 10, 2019	8:00 AM	5:00 PM	Dublin, CA

Fall Protection - OSHA 3115

Start Date	End Date	Start Time	End Time	Site/Location
January 8, 2019	January 10, 2019	8:00 AM	5:00 PM	Dublin, CA
March 25, 2019	March 27, 2019	8:00 AM	5:00 PM	Reno, NV
April 1, 2019	April 3, 2019	8:00 AM	5:00 PM	Sacramento, CA
May 6, 2019	May 8, 2019	8:00 AM	5:00 PM	Redding, CA
May 13, 2019	May 15, 2019	8:00 AM	5:00 PM	Santa Clara, CA
August 16, 2019	August 18, 2019	8:00 AM	5:00 PM	Dublin, CA
September 23, 2019	September 25, 2019	8:00 AM	5:00 PM	Fresno, CA
October 28, 2019	October 30, 2019	8:00 AM	5:00 PM	Sacramento, CA

Hazardous Materials - OSHA 2015

Start Date	End Date	Start Time	End Time	Site/Location
March 4, 2019	March 7, 2019	8:00 AM	5:00 PM	Dublin, CA
July 15, 2019	July 18, 2019	8:00 AM	5:00 PM	Dublin, CA
December 2, 2019	December 5, 2019	8:00 AM	5:00 PM	Reno, NV
December 9, 2019	December 12, 2019	8:00 AM	5:00 PM	Sacramento, CA

HAZWOPER, 40-Hour - OTC 204

Start Date	End Date	Start Time	End Time	Site/Location
January 7, 2019	January 11, 2019	8:00 AM	5:00 PM	Sacramento, CA
May 20, 2019	May 24, 2019	8:00 AM	5:00 PM	Sacramento, CA
June 17, 2019	June 21, 2019	8:00 AM	5:00 PM	Dublin, CA
October 21, 2019	October 25, 2019	8:00 AM	5:00 PM	Dublin, CA

HAZWOPER Refresher, 8-Hour - OTC 202

Start Date	End Date	Start Time	End Time	Site/Location
February 4, 2019	February 4, 2019	8:00 AM	5:00 PM	Sacramento, CA
March 25, 2019	March 25, 2019	8:00 AM	5:00 PM	Dublin, CA
September 13, 2019	September 13, 2019	8:00 AM	5:00 PM	Sacramento, CA
October 19, 2019	October 19, 2019	8:00 AM	5:00 PM	Dublin, CA

Health Hazard Awareness - OSHA 7205

Start Date	End Date	Start Time	End Time	Site/Location
October 1, 2019	October 1, 2019	8:00 AM	5:00 PM	Santa Rosa, CA
November 14, 2019	November 14, 2019	8:00 AM	5:00 PM	Dublin, CA

Introduction to Incident (Accident) Investigation - OSHA 7505

Start Date	End Date	Start Time	End Time	Site/Location
January 16, 2019	January 16, 2019	8:00 AM	5:00 PM	Dublin, CA
January 31, 2019	January 31, 2019	8:00 AM	5:00 PM	Hilo, HI
March 8, 2019	March 8, 2019	8:00 AM	5:00 PM	Redding, CA
April 16, 2019	April 16, 2019	8:00 AM	5:00 PM	Dublin, CA
April 30, 2019	April 30, 2019	8:00 AM	5:00 PM	Las Vegas, NV
June 14, 2019	June 14, 2019	8:00 AM	5:00 PM	Santa Rosa, CA
July 26, 2019	July 26, 2019	8:00 AM	5:00 PM	Fresno, CA
August 6, 2019	August 6, 2019	8:00 AM	5:00 PM	Reno, NV
October 2, 2019	October 2, 2019	8:00 AM	5:00 PM	Dublin, CA
October 28, 2019	October 28, 2019	8:00 AM	5:00 PM	Honolulu, HI
November 8, 2019	November 8, 2019	8:00 AM	5:00 PM	Dublin, CA

Introduction to OSHA for Small Business - OSHA 7510

Start Date	End Date	Start Time	End Time	Site/Location
August 13, 2019	August 13, 2019	8:00 AM	12:30 PM	Dublin, CA

Introduction to Safety and Health Management - OSHA 7500

Start Date	End Date	Start Time	End Time	Site/Location
January 28, 2019	January 28, 2019	8:00 AM	5:00 PM	San Luis Obispo, CA
February 5, 2019	February 5, 2019	8:00 AM	5:00 PM	Sacramento, CA
March 18, 2019	March 18, 2019	8:00 AM	5:00 PM	Oxnard, CA
April 12, 2019	April 12, 2019	8:00 AM	5:00 PM	Redding, CA
July 9, 2019	July 9, 2019	8:00 AM	5:00 PM	Santa Rosa, CA
July 23, 2019	July 23, 2019	8:00 AM	5:00 PM	Dublin, CA
August 2, 2019	August 2, 2019	8:00 AM	5:00 PM	Santa Clara, CA
September 13, 2019	September 13, 2019	8:00 AM	5:00 PM	Reno, NV
October 29, 2019	October 29, 2019	8:00 AM	5:00 PM	Dublin, CA
November 7, 2019	November 7, 2019	8:00 AM	5:00 PM	Hilo, HI

Lockout/Tagout - OSHA 7115

Start Date	End Date	Start Time	End Time	Site/Location
March 1, 2019	March 1, 2019	8:00 AM	5:00 PM	Sacramento, CA
March 4, 2019	March 4, 2019	8:00 AM	5:00 PM	Hilo, HI
April 12, 2019	April 12, 2019	8:00 AM	5:00 PM	Dublin, CA
July 19, 2019	July 19, 2019	8:00 AM	5:00 PM	Reno, NV
July 22, 2019	July 22, 2019	8:00 AM	5:00 PM	Honolulu, HI
August 30, 2019	August 30, 2019	8:00 AM	5:00 PM	Las Vegas, NV
September 20, 2019	September 20, 2019	8:00 AM	5:00 PM	Santa Rosa, CA
October 12, 2019	October 12, 2019	8:00 AM	5:00 PM	Dublin, CA
December 17, 2019	December 17, 2019	8:00 AM	5:00 PM	Sacramento, CA

Machinery and Machine Guarding Standards - OSHA 2045

Start Date	End Date	Start Time	End Time	Site/Location
February 2, 2019	February 10, 2019	8:00 AM	5:00 PM	Dublin, CA
April 15, 2019	April 18, 2019	8:00 AM	5:00 PM	Fresno, CA
May 14, 2019	May 17, 2019	8:00 AM	5:00 PM	Santa Rosa, CA
July 22, 2019	July 25, 2019	8:00 AM	5:00 PM	Dublin, CA

Managing Excavation Hazards - OSHA 7410

Start Date	End Date	Start Time	End Time	Site/Location
June 19, 2019	June 19, 2019	8:00 AM	5:00 PM	Dublin, CA
April 26, 2019	April 26, 2019	8:00 AM	5:00 PM	Santa Clara, CA
December 6, 2019	December 6, 2019	8:00 AM	5:00 PM	Santa Rosa, CA

OSHA Guide to Industrial Hygiene - OSHA 521

Start Date	End Date	Start Time	End Time	Site/Location
April 8, 2019	April 11, 2019	8:00 AM	5:00 PM	San Luis Obispo, CA
May 13, 2019	May 16, 2019	8:00 AM	5:00 PM	Dublin, CA
June 3, 2019	June 6, 2019	8:00 AM	5:00 PM	Las Vegas, NV
September 14, 2019	September 22, 2019	8:00 AM	5:00 PM	Dublin, CA
October 7, 2019	October 10, 2019	8:00 AM	5:00 PM	Las Vegas, NV
October 15, 2019	October 18, 2019	8:00 AM	5:00 PM	Fresno, CA

OSHA 30-Hour Outreach Training for Construction - OTC 107

Start Date	End Date	Start Time	End Time	Site/Location
March 4, 2019	March 7, 2019	8:00 AM	5:00 PM	Santa Clara, CA
March 4, 2019	March 7, 2019	8:00 AM	5:00 PM	Ventura/Oxnard, CA
June 3, 2019	June 6, 2019	8:00 AM	5:00 PM	Redding, CA
July 15, 2019	July 18, 2019	8:00 AM	5:00 PM	Santa Clara, CA
October 1, 2019	October 4, 2019	8:00 AM	5:00 PM	Redding, CA
October 14, 2019	October 17, 2019	8:00 AM	5:00 PM	Santa Clara, CA
December 16, 2019	December 19, 2019	8:00 AM	5:00 PM	Dublin, CA

OSHA 30-Hour Outreach Training for General Industry - OTC 110

Start Date	End Date	Start Time	End Time	Site/Location
June 24, 2019	June 27, 2019	8:00 AM	5:00 PM	Dublin, CA
August 26, 2019	August 29, 2019	8:00 AM	5:00 PM	Santa Rosa, CA
October 28, 2019	October 31, 2019	8:00 AM	5:00 PM	Dublin, CA

OSHA Standards for General Industry - OSHA 511

Start Date	End Date	Start Time	End Time	Site/Location
January 28, 2019	January 31, 2019	8:00 AM	5:00 PM	Dublin, CA
January 28, 2019	January 31, 2019	8:00 AM	5:00 PM	Reno, NV
March 26, 2019	March 29, 2019	8:00 AM	5:00 PM	Las Vegas, NV
April 27, 2019	May 5, 2019	8:00 AM	5:00 PM	Dublin, CA
May 6, 2019	May 9, 2019	8:00 AM	5:00 PM	Ventura/Oxnard, CA
May 7, 2019	May 10, 2019	8:00 AM	5:00 PM	San Luis Obispo, CA
July 9, 2019	July 12, 2019	8:00 AM	5:00 PM	Las Vegas, NV
July 22, 2019	July 25, 2019	8:00 AM	5:00 PM	Fresno, CA
August 12, 2019	August 15, 2019	8:00 AM	5:00 PM	Dublin, CA
August 19, 2019	August 22, 2019	8:00 AM	5:00 PM	Sacramento, CA
October 19, 2019	October 27, 2019	8:00 AM	5:00 PM	Las Vegas, NV
October 21, 2019	October 24, 2019	8:00 AM	5:00 PM	Reno, NV
November 4, 2019	November 7, 2019	8:00 AM	5:00 PM	Santa Clara, CA
November 5, 2019	November 8, 2019	8:00 AM	5:00 PM	Dublin, CA

OSHA Standards for the Construction Industry - OSHA 510

Start Date	End Date	Start Time	End Time	Site/Location
January 12, 2019	January 20, 2019	8:00 AM	5:00 PM	Sacramento, CA
January 28, 2019	January 31, 2019	8:00 AM	5:00 PM	Reno, NV
February 4, 2019	February 7, 2019	8:00 AM	5:00 PM	Dublin, CA
February 4, 2019	February 7, 2019	8:00 AM	5:00 PM	San Luis Obispo, CA
February 4, 2019	February 7, 2019	8:00 AM	5:00 PM	Redding, CA
February 11, 2019	February 14, 2019	8:00 AM	5:00 PM	Santa Rosa, CA
February 25, 2019	February 28, 2019	8:00 AM	5:00 PM	Fresno, CA
March 26, 2019	March 29, 2019	8:00 AM	5:00 PM	Honolulu, HI
April 15, 2019	April 18, 2019	8:00 AM	5:00 PM	Santa Clara, CA
May 6, 2019	May 9, 2019	8:00 AM	5:00 PM	Dublin, CA
June 1, 2019	June 9, 2019	8:00 AM	5:00 PM	Dublin, CA
June 3, 2019	June 6, 2019	8:00 AM	5:00 PM	Sacramento, CA
June 24, 2019	June 27, 2019	8:00 AM	5:00 PM	Reno, NV
July 15, 2019	July 18, 2019	8:00 AM	5:00 PM	Redding, CA
July 23, 2019	July 26, 2019	8:00 AM	5:00 PM	Ventura/Oxnard, CA
August 19, 2019	August 22, 2019	8:00 AM	5:00 PM	Fresno, CA
September 9, 2019	September 12, 2019	8:00 AM	5:00 PM	Dublin, CA
September 24, 2019	September 27, 2019	8:00 AM	5:00 PM	San Luis Obispo, CA
October 21, 2019	October 24, 2019	8:00 AM	5:00 PM	Sacramento, CA
November 2, 2019	November 10, 2019	8:00 AM	5:00 PM	Dublin, CA
November 5, 2019	November 8, 2019	8:00 AM	5:00 PM	Las Vegas, NV

OSHA Standards for the Maritime Industry - OSHA 5410

Start Date	End Date	Start Time	End Time	Site/Location
March 25, 2019	March 29, 2019	8:00 AM	5:00 PM	Dublin, CA
August 19, 2019	August 23, 2019	8:00 AM	5:00 PM	Dublin, CA

Permit Required Confined Space Entry - OSHA 2264

Start Date	End Date	Start Time	End Time	Site/Location
April 8, 2019	April 10, 2019	8:00 AM	5:00 PM	Sacramento, CA
May 20, 2019	May 22, 2019	8:00 AM	5:00 PM	Fresno, CA
May 20, 2019	May 22, 2019	8:00 AM	5:00 PM	Reno, NV
August 5, 2019	August 7, 2019	8:00 AM	5:00 PM	San Luis Obispo, CA
September 4, 2019	September 6, 2019	8:00 AM	5:00 PM	Sacramento, CA
September 10, 2019	September 12, 2019	8:00 AM	5:00 PM	Redding, CA

Principles of Ergonomics - OSHA 2255

Start Date	End Date	Start Time	End Time	Site/Location
January 22, 2019	January 24, 2019	8:00 AM	5:00 PM	Ventura/Oxnard, CA
February 22, 2019	February 24, 2019	8:00 AM	5:00 PM	Dublin, CA
April 23, 2019	April 25, 2019	8:00 AM	5:00 PM	Reno, NV
May 20, 2019	May 22, 2019	8:00 AM	5:00 PM	Las Vegas, NV
August 5, 2019	August 7, 2019	8:00 AM	5:00 PM	Sacramento, CA
August 26, 2019	August 28, 2019	8:00 AM	5:00 PM	Dublin, CA
December 2, 2019	December 4, 2019	8:00 AM	5:00 PM	San Luis Obispo, CA
December 16, 2019	December 18, 2019	8:00 AM	5:00 PM	Fresno, CA

Principles of Scaffolding - OSHA 3085

Start Date	End Date	Start Time	End Time	Site/Location
February 25, 2019	February 27, 2019	8:00 AM	5:00 PM	Sacramento, CA
June 24, 2019	June 26, 2019	8:00 AM	5:00 PM	Fresno, CA
July 24, 2019	July 26, 2019	8:00 AM	5:00 PM	Dublin, CA
December 9, 2019	December 11, 2019	8:00 AM	5:00 PM	Sacramento, CA

Public Warehousing and Storage - OSHA 7005

Start Date	End Date	Start Time	End Time	Site/Location
June 6, 2019	June 6, 2019	8:00 AM	5:00 PM	Dublin, CA

Recordkeeping Rule Seminar - OSHA 7845

Start Date	End Date	Start Time	End Time	Site/Location
March 1, 2019	March 1, 2019	8:00 AM	12:30 PM	Reno, NV
May 10, 2019	May 10, 2019	8:00 AM	12:30 PM	Fresno, CA
June 21, 2019	June 21, 2019	8:00 AM	12:30 PM	Dublin, CA
August 5, 2019	August 5, 2019	8:00 AM	12:30 PM	Hilo, HI
September 20, 2019	September 20, 2019	8:00 AM	12:30 PM	Santa Clara, CA
September 27, 2019	September 27, 2019	8:00 AM	12:30 PM	Las Vegas, NV
October 25, 2019	October 25, 2019	8:00 AM	12:30 PM	Ventura/Oxnard, CA
November 1, 2019	November 1, 2019	8:00 AM	12:30 PM	Santa Rosa, CA
November 5, 2019	November 5, 2019	8:00 AM	12:30 PM	Redding, CA
December 13, 2019	December 13, 2019	8:00 AM	12:30 PM	Dublin, CA

Respiratory Protection - OSHA 2225

Start Date	End Date	Start Time	End Time	Site/Location
March 25, 2019	March 28, 2019	8:00 AM	5:00 PM	Sacramento, CA
June 3, 2019	June 6, 2019	8:00 AM	5:00 PM	Las Vegas, NV
June 11, 2019	June 14, 2019	8:00 AM	5:00 PM	Dublin, CA
September 9, 2019	September 12, 2019	8:00 AM	5:00 PM	Las Vegas, NV
October 15, 2019	October 18, 2019	8:00 AM	5:00 PM	Dublin, CA

Safety Inspection Techniques - OTC 308

Start Date	End Date	Start Time	End Time	Site/Location
April 24, 2019	April 26, 2019	8:00 AM	5:00 PM	Dublin, CA
May 28, 2019	May 30, 2019	8:00 AM	5:00 PM	Santa Rosa, CA
July 31, 2019	August 2, 2019	8:00 AM	5:00 PM	Dublin, CA
November 4, 2019	November 6, 2019	8:00 AM	5:00 PM	Sacramento, CA
November 13, 2019	November 15, 2019	8:00 AM	5:00 PM	Dublin, CA

Silica in Construction, Maritime and General Industries - OSHA 7215

Start Date	End Date	Start Time	End Time	Site/Location
April 12, 2019	April 12, 2019	8:00 AM	5:00 PM	Ventura/Oxnard, CA
May 9, 2019	May 9, 2019	8:00 AM	5:00 PM	Fresno, CA
June 13, 2019	June 13, 2019	8:00 AM	5:00 PM	Santa Rosa, CA
July 12, 2019	July 12, 2019	8:00 AM	5:00 PM	Dublin, CA
August 23, 2019	August 23, 2019	8:00 AM	5:00 PM	Sacramento, CA

Trainer Course in OSHA Standards for General Industry - OSHA 501

Start Date	End Date	Start Time	End Time	Site/Location
February 25, 2019	February 28, 2019	8:00 AM	5:00 PM	Dublin, CA
February 25, 2019	February 28, 2019	8:00 AM	5:00 PM	Reno, NV
April 9, 2019	April 12, 2019	8:00 AM	5:00 PM	Las Vegas, NV
June 22, 2019	June 30, 2019	8:00 AM	5:00 PM	Dublin, CA
July 8, 2019	July 11, 2019	8:00 AM	5:00 PM	San Luis Obispo, CA
August 6, 2019	August 9, 2019	8:00 AM	5:00 PM	Las Vegas, NV
August 19, 2019	August 22, 2019	8:00 AM	5:00 PM	Ventura/Oxnard, CA
August 26, 2019	August 29, 2019	8:00 AM	5:00 PM	Fresno, CA
September 16, 2019	September 19, 2019	8:00 AM	5:00 PM	Dublin, CA
September 23, 2019	September 26, 2019	8:00 AM	5:00 PM	Sacramento, CA
November 9, 2019	November 17, 2019	8:00 AM	5:00 PM	Las Vegas, NV
November 18, 2019	November 21, 2019	8:00 AM	5:00 PM	Reno, NV
December 2, 2019	December 5, 2019	8:00 AM	5:00 PM	Santa Clara, CA
December 9, 2019	December 12, 2019	8:00 AM	5:00 PM	Dublin, CA



Trainer Course in OSHA Standards for the Construction Industry - OSHA 500

Start Date	End Date	Start Time	End Time	Site/Location
February 16, 2019	February 24, 2019	8:00 AM	5:00 PM	Sacramento, CA
February 25, 2019	February 28, 2019	8:00 AM	5:00 PM	Reno, NV
March 4, 2019	March 7, 2019	8:00 AM	5:00 PM	Dublin, CA
March 4, 2019	March 7, 2019	8:00 AM	5:00 PM	San Luis Obispo, CA
March 4, 2019	March 7, 2019	8:00 AM	5:00 PM	Redding, CA
March 25, 2019	March 28, 2019	8:00 AM	5:00 PM	Fresno, CA
March 25, 2019	March 28, 2019	8:00 AM	5:00 PM	Santa Rosa, CA
May 6, 2019	May 9, 2019	8:00 AM	5:00 PM	Honolulu, HI
June 3, 2019	June 6, 2019	8:00 AM	5:00 PM	Dublin, CA
June 3, 2019	June 6, 2019	8:00 AM	5:00 PM	Santa Clara, CA
July 13, 2019	July 21, 2019	8:00 AM	5:00 PM	Dublin, CA
July 15, 2019	July 18, 2019	8:00 AM	5:00 PM	Sacramento, CA
July 22, 2019	July 25, 2019	8:00 AM	5:00 PM	Reno, NV
August 13, 2019	August 16, 2019	8:00 AM	5:00 PM	Redding, CA
September 16, 2019	September 19, 2019	8:00 AM	5:00 PM	Ventura/Oxnard, CA
September 17, 2019	September 20, 2019	8:00 AM	5:00 PM	Fresno, CA
October 7, 2019	October 10, 2019	8:00 AM	5:00 PM	Dublin, CA
November 12, 2019	November 15, 2019	8:00 AM	5:00 PM	San Luis Obispo, CA
November 18, 2019	November 21, 2019	8:00 AM	5:00 PM	Sacramento, CA
December 2, 2019	December 5, 2019	8:00 AM	5:00 PM	Las Vegas, NV
December 7, 2019	December 15, 2019	8:00 AM	5:00 PM	Dublin, CA

Trainer Course in OSHA Standards for the Maritime Industry - OSHA 5400

Start Date	End Date	Start Time	End Time	Site/Location
April 23, 2019	April 26, 2019	8:00 AM	5:00 PM	Dublin, CA
September 23, 2019	September 26, 2019	8:00 AM	5:00 PM	Dublin, CA

Trainer Course in Permit Required Confined Space Entry - OTC 403

Start Date	End Date	Start Time	End Time	Site/Location
April 11, 2019	April 12, 2019	8:00 AM	5:00 PM	Sacramento, CA
May 23, 2019	May 24, 2019	8:00 AM	5:00 PM	Reno, NV
September 9, 2019	September 10, 2019	8:00 AM	5:00 PM	Sacramento, CA

Training Techniques for the Safety Professional - OTC 302

Start Date	End Date	Start Time	End Time	Site/Location
June 11, 2019	June 12, 2019	8:00 AM	5:00 PM	Dublin, CA
December 11, 2019	December 12, 2019	8:00 AM	5:00 PM	Dublin, CA

Understanding OSHA's Permit Required Confined Space Standard - OSHA 7300

Start Date	End Date	Start Time	End Time	Site/Location
April 8, 2019	April 8, 2019	8:00 AM	5:00 PM	Santa Rosa, CA
April 23, 2019	April 23, 2019	8:00 AM	5:00 PM	Oxnard, CA
June 6, 2019	June 6, 2019	8:00 AM	5:00 PM	Hilo, HI

Update for Construction Industry Outreach Trainers - OSHA 502

Start Date	End Date	Start Time	End Time	Site/Location
January 23, 2019	January 25, 2019	8:00 AM	5:00 PM	Dublin, CA
March 26, 2019	March 28, 2019	8:00 AM	5:00 PM	Dublin, CA
May 28, 2019	May 30, 2019	8:00 AM	5:00 PM	Fresno, CA
July 26, 2019	July 28, 2019	8:00 AM	5:00 PM	Dublin, CA
October 3, 2019	October 5, 2019	8:00 AM	5:00 PM	Dublin, CA
December 6, 2019	December 8, 2019	8:00 AM	5:00 PM	Sacramento, CA

Update for General Industry Outreach Trainers - OSHA 503

Start Date	End Date	Start Time	End Time	Site/Location
March 18, 2019	March 20, 2019	8:00 AM	5:00 PM	Sacramento, CA
April 10, 2019	April 12, 2019	8:00 AM	5:00 PM	Dublin, CA
May 3, 2019	May 5, 2019	8:00 AM	5:00 PM	Las Vegas, NV
July 11, 2019	July 13, 2019	8:00 AM	5:00 PM	Dublin, CA
November 1, 2019	November 3, 2019	8:00 AM	5:00 PM	Dublin, CA

Course Index

Bloodborne Pathogens Exposure Control for Healthcare Facilities OSHA 7200	13
Cal/OSHA 30-Hour Outreach Training for Construction	13
Cal/OSHA 30-Hour Outreach Training for General Industry	13
Cal/OSHA Standards for General Industry OSHA 5119	13
Cal/OSHA Standards for the Construction Industry OSHA 5109	14
Cal/OSHA Update for Construction Industry Outreach Trainers OSHA 5029	14
Cal/OSHA Update for General Industry Outreach Trainers OSHA 5039	14
Collateral Duty Course for Other Federal Agencies OSHA 6005	14
Confined Space Rescue Operations OTC 304	15
Construction Industry Hazards and Prevention Strategies OSHA 7415	15
Disaster Site Worker Trainer Course OSHA 5600	15
Electrical Safety for Qualified Workers (NFPA 70E) OTC 306	15
Electrical Standards OSHA 3095	16
EM 385 1-1 Construction Safety and Health Awareness Course for Contractors EM 385-1-1	16
Evacuation and Emergency Planning OSHA 7105	16
Excavation, Trenching and Soil Mechanics OSHA 3015	16
Fall Hazard Awareness for the Construction Industry OSHA 7405	16
Fall Protection OSHA 3115	17
Hazardous Materials OSHA 2015	17
Hazard Recognition and Standards for On-Shore Oil and Gas Exploration and Production OSHA 5810	17
HAZWOPER, 40 Hour OTC 204	17
HAZWOPER Refresher, 8 Hour OTC 202	17
Heath Hazard Awareness OSHA 7205	18
Introduction to Accident Investigation OSHA 7505	18
Introduction to Machinery and Machine Safeguarding OSHA 7100	18
Introduction to OSHA for Small Businesses OSHA 7510	18
Introduction to Safety and Health Management OSHA 7500	18
Lockout/Tagout - Controlling Hazardous Energy to Prevent Workplace Injury OSHA 7115	19
Machinery and Machine Guarding Standards OSHA 2045	19
Managing Excavation Hazards OSHA 7410	19
Maritime Industry Trainer Update Course OSHA 5402	19
Noise in the Construction Industry OSHA 7400	20
Occupational Safety and Health Course for Other Federal Agencies OSHA 6015 (formerly 6010)	20
OSHA Guide to Industrial Hygiene OSHA 521	20
OSHA 30-Hour Outreach Training for Construction - OTC 107	20
OSHA 30-Hour Outreach Training for General Industry - OTC 110	21
OSHA Standards for General Industry OSHA 511	21
OSHA Standards for the Construction Industry OSHA 510	21

Course Index (continued)

OSHA Standards for the Maritime Industry OSHA 5410	22
OSHA Training Guidelines for Safe Patient Handling OSHA 7000	22
Pandemic Influenza Preparedness OSHA 7210	22
Permit Required Confined Space Entry OSHA 2264	22
Principles of Ergonomics OSHA 2255	23
Principles of Scaffolding OSHA 3085	23
Public Warehousing and Storage OSHA 7005	23
Recordkeeping Rule Seminar OSHA 7845	23
Respiratory Protection OSHA 2225	24
Safety Inspection Techniques OTC 308	24
Silica in Construction, Maritime and General Industries NEW! OTC 7215	24
Trainer Course in OSHA Standards for General Industry OSHA 501	24
Trainer Course in OSHA Standards for the Construction Industry OSHA 500	25
Trainer Course in OSHA Standards for the Maritime Industry OSHA 5400	25
Trainer Course in Permit-Required Confined Space Entry NEW! OTC 403	25
Training Techniques for the Safety Professional OTC 302	26
Understanding OSHA's Permit-Required Confined Space Standard	26
Update for Construction Industry Outreach Trainers OSHA 502	26
Update for Disaster Site Worker Trainer Course OSHA 5602	26
Update for General Industry Outreach Trainers OSHA 503	27
Workplace Violence Prevention and Survival OTC 310	27

Consider On-site Training

- **Customize the courses to match your goals**
- **Eliminate staff travel expenses**
- **Accommodate variable shifts and schedules**
- **Boost the immediate transfer of training to the workplace**

OSHA Training Institute Education Center

Chabot-Las Positas Community College District
Office of Economic Development and Contract Education
7600 Dublin Blvd., Suite 140, Dublin, CA 94568

Workplace injuries
affect the entire family.



Choose Safety. Put Family First.

OSHA Authorized Education Center

- Outreach Training Programs
- Professional Certificates
- Customized On-Site Training
- Serving California, Nevada, Hawaii, Arizona and Guam

Specializing in

- Construction
- General Industry
- Maritime
- Disaster Preparedness



Chabot-Las Positas
Community College District

www.osha4you.com • otc@clpccd.org • (866) 936-OSHA (6742)



Linked  Find us on 

osha4you.com • 866.936.OSHA (6742) • 7600 Dublin Blvd., Suite 140, Dublin, CA 94568